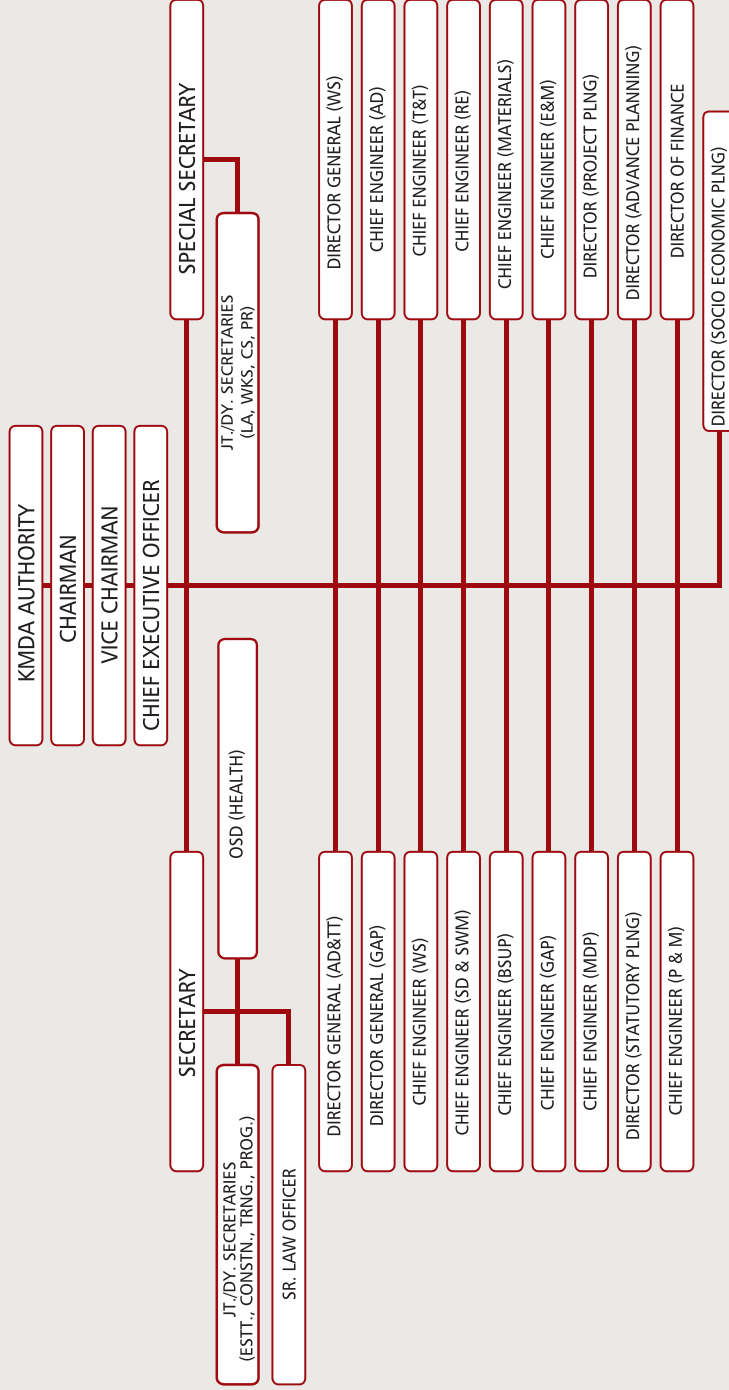


Annexure

Annexure-I

KMDA ORGANOGRAM



ESTT = Establishment; CONSTN = Constitution; TRNG = Training; PROG = Programme; PLNG = Planning; LA = Land Acquisition; WKS = Works; CS = Common Services; PR = Public Relations; P&M = Programming & Monitoring; WS = Water Supply; SD&SWM = Sewerage, Drainage & Solid Waste Management; AD = Area Development; RE = Real Estate; BSUP = Basic Services of Urban Poor; MDP = Municipal Development Programme; E&M = Electrical & Mechanical; GAP = Ganga Action Plan; T&T = Traffic & Transportation.