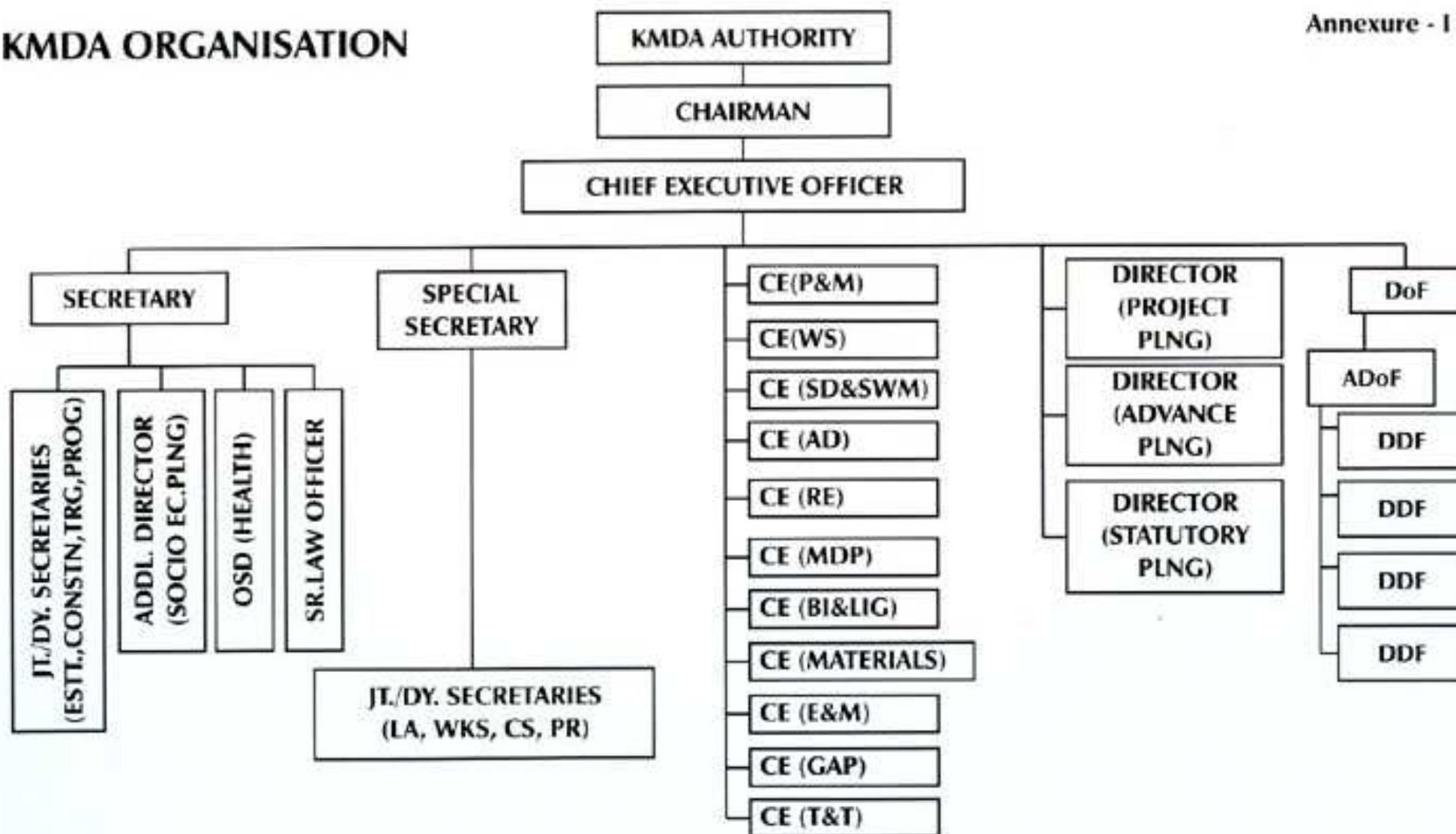


# KMDA ORGANISATION

Annexure - I



ESTT = Establishment; CONSTN = Constitution; TRG = Training; PROG = Programme; PLNG = Planning; LA = Land Acquisition; WKS = Works; CS = Common Service; PR = Public Relation; CE = Chief Engineer; P&M = Programming & Monitoring; WS = Water Supply; SD&SWM = Sewerage, Drainage and Solid Waste Management; AD = Area Development; RE = Real Estate; MDP = Municipal Development Programme; BI&LIG = Bustee Improvement and Low Income Group; E&M, Electrical and Mechanical; GAP = Ganga Action Plan; T&T = Traffic and Transportation; DoF = Director of Finance; ADoF = Additional Director of Finance; DDF = Deputy Director of Finance.